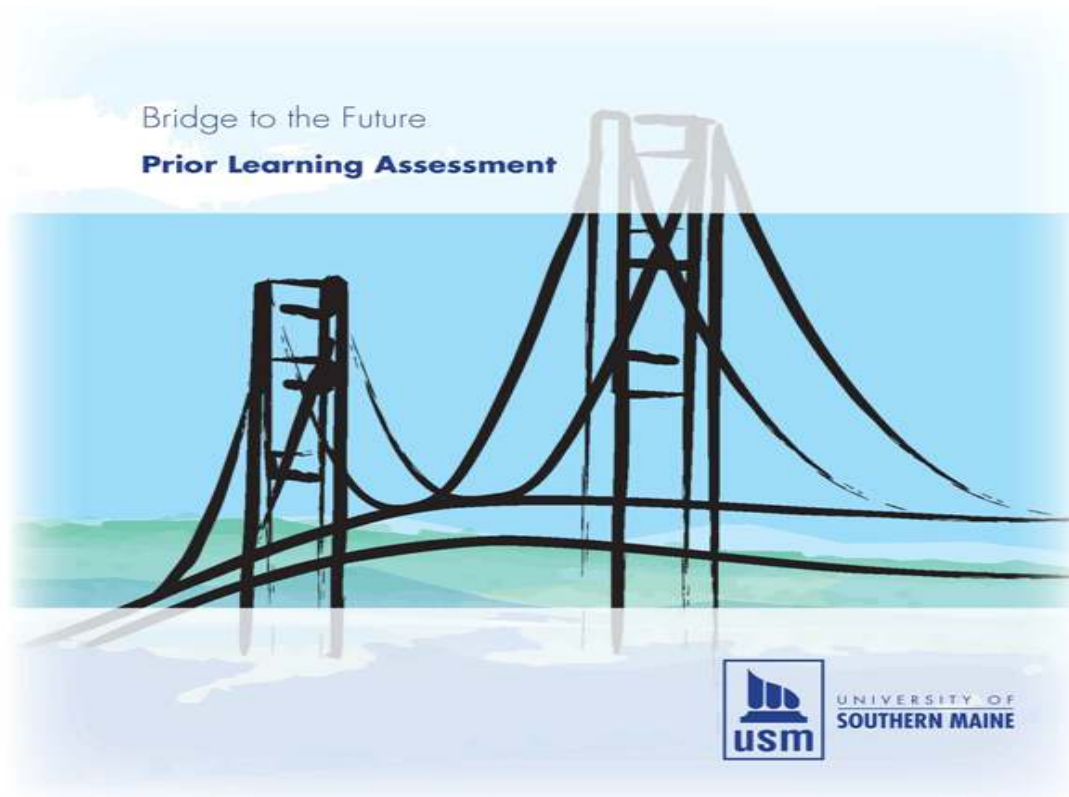


CLEP EXAMS



FALL 2009 EXAM SCHEDULE

TEST DATE	TEST LOCATION	REGISTRATION DEADLINE
Wed., August 5, 2009 8:30 a.m.	SESSION A 240 Luther Bonney, Portland	Friday, July 24, 2009
Wed., August 5, 2009 1:30 p.m.	SESSION B 240 Luther Bonney, Portland	Friday, July 24, 2009
Wed., September 9, 2009 8:30 a.m.	SESSION A 240 Luther Bonney, Portland	Friday, August 28, 2009
Wed., September 9, 2009 1:30 p.m.	SESSION B 240 Luther Bonney, Portland	Friday, August 28, 2009
Wed., October 7, 2009 8:30 a.m.	SESSION A 240 Luther Bonney, Portland	Friday, Sept. 25, 2009
Wed., October 7, 2009 1:30 p.m.	SESSION B 240 Luther Bonney, Portland	Friday, Sept. 25, 2009
Wed., November 4, 2009 8:30 a.m.	SESSION A 240 Luther Bonney, Portland	Friday, Oct. 23, 2009
Wed., November 4, 2009 1:30 p.m.	SESSION B 240 Luther Bonney, Portland	Friday, Oct. 23, 2009
Wed., December 2, 2009 8:30 a.m.	SESSION A 240 Luther Bonney, Portland	Friday, Nov. 20, 2009
Wed., December 2, 2009 1:30 p.m.	SESSION B 240 Luther Bonney, Portland	Friday, Nov. 20, 2009