

UNIVERSITY OF SOUTHERN MAINE

FACT BOOK

2005-2006

Prepared by

Management Information Services

Institutional Research Information Report #06-1



Vilma J. Herrick deserves full credit for the design, organization, and overseeing the production of this Fact Book. From start to finish, she has placed high standards upon all involved in providing information for the book. The results of her effort display the professionalism involved. Our thanks also to Patrick Corey of Publications for his design work of the cover.

Lawrence E. Braziel, Director
Management Information Service

TABLE OF CONTENTS

MISSION STATEMENT	1
PROFILES (System-Wide, Institutional, and Student)	2, 3, & 5
ADMINISTRATIVE STRUCTURE	4
ACADEMIC PROGRAMS	6-7
ADMISSIONS DATA	8
ENROLLMENT DATA	9-11
STUDENT CHARACTERISTICS (Residence, County, Foreign Countries, School/College, Credit Hours, Age/Sex)	12-17
DEGREES CONFERRED	18
FINANCIAL AID DATA	19
ALUMNI	20-21
GIFT REPORT	22
BASIC YEARLY COSTS	23
FINANCIAL DATA	24-25
EMPLOYEE STATISTICS	26-27
LIBRARY AND LAW LIBRARY	28-29
DIVISION OF INFORMATION & TECHNOLOGY	30-31
EDUCATIONAL MEDIA SERVICES	32
OFFICE OF SPONSORED RESEARCH	33
SUMMER SESSION DATA	34
PUBLIC SERVICE ACTIVITIES (Non-Credit Activities, Conferences)	35-36
FACILITIES MANAGEMENT (Physical Facilities - see inside covers)	37

UNIVERSITY OF SOUTHERN MAINE

MISSION STATEMENT

The University of Southern Maine with a rich history reaching back to 1878, is Maine's comprehensive metropolitan university offering associate, baccalaureate, graduate, and professional degrees within the University of Maine System. The University of Southern Maine's fundamental mission is teaching, research, and public service for the benefit of the citizens of Maine and society in general. In achieving its mission as a university, the University of Southern Maine also serves as a vehicle for linking southern Maine and the state to the nation and the world. The University actively encourages faculty, staff, and students to contribute to and participate in state, national, and international academic and professional communities.

The University's principal responsibility is to provide a wide range of programs responsive to students diverse in age, background, and experience. Undergraduate education at the University of Southern Maine provides every student with a solid foundation in the liberal arts and the sciences. Master's, professional, and selected doctoral degrees and research programs emphasize the integration of theory and practice. The University of Southern Maine seeks to assure broad access to educational opportunities including lifelong learning and is committed to providing academic and support services essential to the needs of a diverse student body. This commitment includes creating a strong sense of university community and a vibrant, diverse cultural environment for the University's students, faculty, staff, and the entire community of southern Maine. In all activities, the University continually strives for excellence in teaching and learning.

As an essential Maine resource, the University's program priorities are driven by the needs of the people and institutions of southern Maine in particular, and the state in general. The University fulfills an historical and special commitment to elementary and secondary education through the preparation of teachers and educational leaders. The University of Southern Maine links the teaching, research, and public service capabilities of faculty and staff, through both traditional and interdisciplinary programs and units, with the people, organizations, and institutions of the state and region. As one of seven campuses in the University of Maine System, the University of Southern Maine complements and collaborates with the other six institutions in the System and the Maine Community College System to fulfill the needs of public education in the State of Maine.

UNIVERSITY OF MAINE SYSTEM

PROFILE

- * The University of Maine System is a state-wide, seven university, public university system chartered by the 104th Legislature "to develop, maintain, and support a cohesive structure of public higher education in the State of Maine."
- * The Board of Trustees, in consultation with the chancellor, is the governing and planning body of the University of Maine System and has statutory responsibility for preparation and approval of the operating and capital budgets of the University of Maine System. In accordance with the Laws of the State of Maine, the Board of Trustees of the University of Maine System consists of sixteen members. Fourteen members are appointed by the Governor for five-year terms, and a student member is appointed for a two-year term. Appointments are subject to review by the Joint Standing Committee on Education and confirmation by the Legislature. The Commissioner of Education serves as a voting member ex-officio.
- * The Trustees appoint a Chancellor to act as chief administrative and academic officer of the System and, on the nomination of the Chancellor, appoint Presidents to lead each university.
- * The University of Maine System, created by statute in 1968, is tax exempt under Section 501 (C)(3) of the 1986 Internal Revenue Code and encompasses the State's seven public universities: the University of Maine, Maine's Land Grant and Sea Grant institution; the University of Southern Maine, a comprehensive urban university; four baccalaureate institutions -- the University of Maine at Farmington, the University of Maine at Fort Kent, the University of Maine at Machias, and the University of Maine at Presque Isle; and the University of Maine at Augusta which offers selected baccalaureate and associate degree programs.
- * The University of Maine System occupies approximately 5,069 acres of developed land with its facilities providing approximately 9.4 million square feet of space; the replacement value of land, facilities, equipment, and furnishings is in excess of \$1.9 billion. The University has 42 residence halls with a capacity of 7,316 students.
- * The fall 2005 enrollment was 35,245 with:

20,777 full-time	and	13,468 part-time students
29,635 undergraduate	and	4,610 graduate students
29,983 in-state	and	4,262 out-of-state students
21,308 women	and	12,937 men
- * There were 5,331 degrees awarded by the University of Maine System in 2004/2005; 445 Associate; 3,771 Baccalaureate; 915 Masters; 40 Doctoral; 65 Certificates of Advanced Study; and 95 Jurisprudence degrees.
- * As of October, 2005, the University of Maine System employs 5,328 regular employees: 1,468 Faculty; 1,944 Salaried and 1,916 Hourly employees.
- * The E & G Operating Budget for 2005/2006 is \$364,832,253.
- * The average cost for a Maine undergraduate student to attend the University is \$15,484 including tuition, room and board, books, and personal expenses.
- * The University of Maine System is accredited, at its seven institutions, by national, regional, and state agencies to provide academic program offerings in arts and sciences, education, agriculture, life sciences, engineering, forestry, law, and business.

(Source: Office of Finance and Treasurer, University of Maine System)
(Employee figures provided by Human Resources)

UNIVERSITY OF SOUTHERN MAINE

INSTITUTIONAL PROFILE

- * With an enrollment of 10,974, the University of Southern Maine is the largest of the seven campuses in the University of Maine System.

- * Created in 1970 by the merger of two state supported institutions under the name University of Maine at Portland-Gorham, and renamed the University of Southern Maine in 1978. Gorham Teachers College (1945) was founded as Western Maine Normal School in 1878, while the University of Maine at Portland (1957) was founded as Portland Junior College in 1933. Lewiston/Auburn College was created as the third campus of the University of Southern Maine in 1988.

- * USM has three campuses, one in the city of Portland (population 64,249), one in the rural town of Gorham (population 14,141), and one in Lewiston/Auburn (population Lewiston: 35,690, and Auburn: 23,203).

- * USM has 1,593 regular employees: 399 Faculty, 705 Professional staff, and 489 Classified staff.

- * Of the 391 full-time instructional faculty, 64% are tenured, 43% are female, the average age is 52, and the average length of service is 14 years.

- * Approximately 1,575 course sections are offered each semester to both full-time and part-time students from 8:00 a.m. to 9:30 p.m., Monday-Friday, 8:00 a.m. to 4:30 p.m. on Saturday, and Sunday afternoon. There are courses available to students approximately 350 days per year.

- * USM's 2005 fall enrollment of 10,974 accounted for 31% of all enrollees in the University of Maine system.

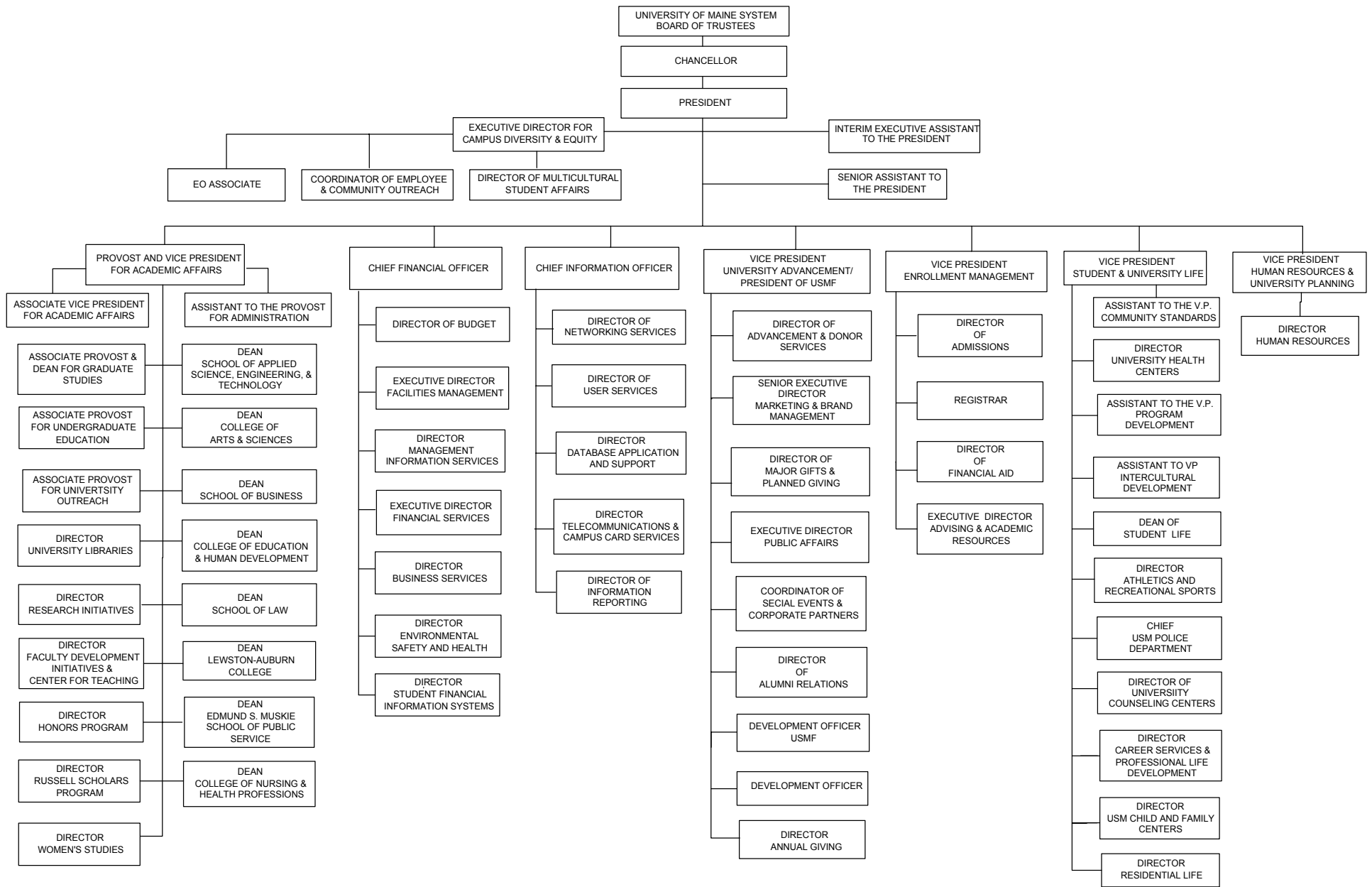
- * USM also offers summer and winter sessions: in summer 2005, 4,999 students chose from over 650 courses; in winter 2004/2005, 325 students chose from 21 courses.

- * During 2004-2005, 107,553 persons participated in 2,941 public service activities.

- * The E & G Operating Budget for 2004-2005 was \$92,235,154. (2005-2006 figures not available at publication date.)

- * The University of Southern Maine is accredited by the New England Association of Schools and Colleges.

UNIVERSITY OF SOUTHERN MAINE ADMINISTRATIVE STRUCTURE



UNIVERSITY OF SOUTHERN MAINE

STUDENT PROFILE

- * Enrollment in fall 2005 was 10,974 including 8,622 undergraduates and 2,352 graduate/law students.

- * There are 5,987 full-time students (54.6%) and 4,987 part-time students (45.4%) comprising a total of 6,526 full-time equivalent (FTE) students.

- * Maine residents comprise 91.6% of the total enrollment, with 77.4% of these coming from Cumberland, York, and Androscoggin counties.

- * Women constitute the majority -- accounting for 61.3% of the total enrollment.

- * The average age of all students is 28.5 years.

- * 79.7% of all enrollees are degree candidates.

- * There were 1,793 new students entering USM in the 2005 fall semester, of which 1,009 were freshmen and 784 were transfer students.

- * Students living in dormitories number 1,454 or 13.3% of the total student population. There are 1,281 living on the Gorham campus and 173 living in Portland.

- * In 2005-06 8,900 students were awarded financial aid; the average aid amount was \$11,100.

- * Degrees conferred during 2004-05 totaled 1,566:
 - 95 law
 - 440 masters
 - 1000 baccalaureate
 - 31 associate

- * The University of Southern Maine has 30,994 active alumni in all fifty states and numerous foreign countries, which are led by Canada with 75, United Kingdom 19, Japan 17, and Germany and Spain with 6 each.

ACADEMIC PROGRAMS

FALL 2005

BACCALAUREATE DEGREE PROGRAMS

COLLEGE OF ARTS & SCIENCES

Applied Chemistry	Mathematics
Art	Media Studies
Fine Arts	Music
Biology	Music Education
Chemistry	Music Performance
Communication	Philosophy
Criminology	Physics
Economics	Political Science
English	Psychology
French	Self-Designed Major
Geography/Anthropology	Social Work
Geosciences	Sociology
History	Theatre
Linguistics	

LEWISTON-AUBURN COLLEGE

Arts & Humanities
Leadership & Organizational Studies
Natural & Applied Sciences
Social & Behavioral Sciences

SCHOOL OF APPLIED SCIENCE, ENGINEERING & TECHNOLOGY

Applied Technical Education
Applied Technical Leadership
Computer Science
Electrical Engineering
Environmental Safety & Health
Environmental Science and Policy
Industrial Technology
Technology Education

COLLEGE OF NURSING & HEALTH PROFESSIONS

Nursing
Therapeutic Recreation
Health Sciences
Radiation Therapy
Sports Medicine

SCHOOL OF BUSINESS

Accounting and Finance
Business Administration

WOMEN'S STUDIES

Women's Studies

ASSOCIATE DEGREE PROGRAMS

COLLEGE OF NURSING & HEALTH PROFESSIONS

Therapeutic Recreation

ACADEMIC PROGRAMS

FALL 2005

GRADUATE LEVEL DEGREE PROGRAMS

SCHOOL OF APPLIED SCIENCE, ENGINEERING & TECHNOLOGY

Applied Immunology & Molecular Biology (M.S.)
Computer Science (M.S.)
Manufacturing Systems (M.M.S.)

COLLEGE OF ARTS & SCIENCES

American and New England Studies (M.A.)
Biology (M.S.)
Creative Writing (M.F.A.)
Music (M.M.)
Social Work (M.S.W.)
Statistics (M.S.)

COLLEGE OF EDUCATION & HUMAN DEVELOPMENT

Adult Education (M.S.)
Counselor Education (M.S.)
Special Education (M.S.)
Educational Leadership (M.S. Ed)
Extended Teacher Education Program (ETEP)
Literacy Education (M.S. Ed)
School Psychology (M.S.)
School Psychology (Psy. D.)

LEWISTON-AUBURN COLLEGE

Leadership Studies (M.A.)
Occupational Therapy (M.O.T.)

SCHOOL OF BUSINESS

Accounting (M.S.A.)
Business Administration (M.B.A.)

COLLEGE OF NURSING & HEALTH PROFESSIONS

Nursing (M.S.)

UNIVERSITY OF MAINE SCHOOL OF LAW

Law (J.D.)

EDMUND S. MUSKIE SCHOOL OF PUBLIC SERVICE

Community Planning & Development (M.C.P.D.)
Health Policy & Management (M.S.)
Public Policy (Ph.D.)
Public Policy & Management (M.P.P.)

Certificates of Advanced Graduate Study (post-master's degree) are available in both the College of Education and Human Development and the College of Nursing and Health Professions in a number of concentrations.

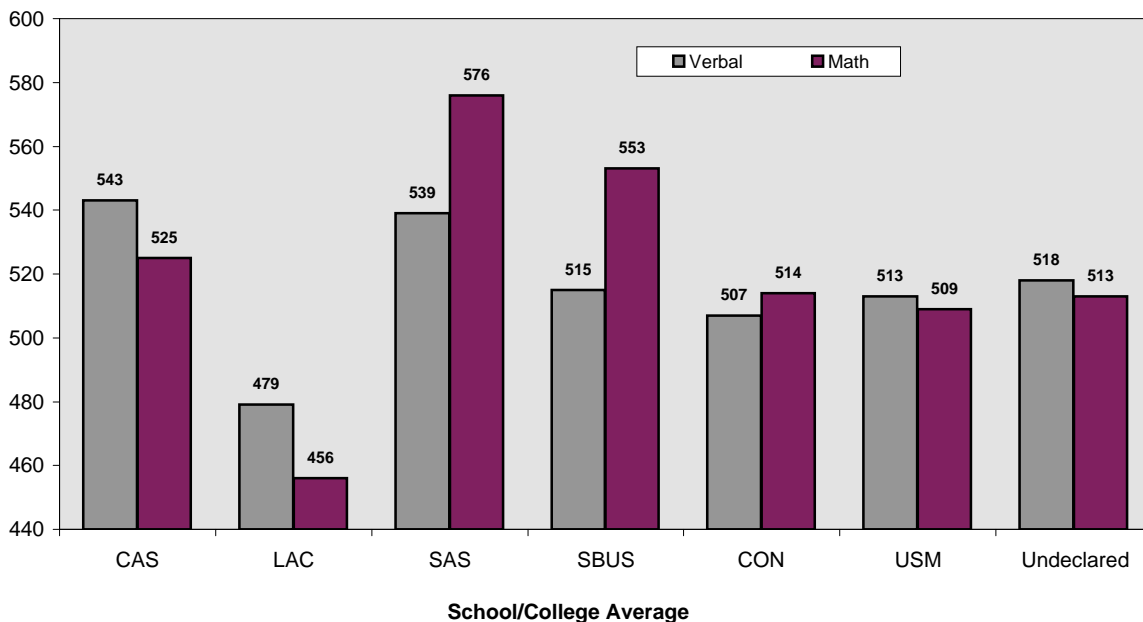
Certificates of Graduate Study (post-baccalaureate degree) are available in a variety of disciplines including Theatre, Education, Manufacturing, CPD, HPM, and Statistics.

ADMISSIONS DATA - FALL, 2005

<u>FALL 2005</u>	<u>FIRST-YEAR</u>	<u>TRANSFER</u>	<u>TOTAL</u>
APPLIED	3,599	1,534	5,133
ACCEPTED	2,848	1,130	3,978
Regular	2,300	1,097	3,397
Conditional	548	33	581
TOTAL	2,848	1,130	3,978
ENROLLED	1,009	784	1,793
Regular	757	761	1,518
Conditional	252	23	275
TOTAL	1,009	784	1,793

<u>ENROLLED STUDENTS</u>			
<u>BY SCHOOL/COLLEGE</u>	<u>FIRST-YEAR</u>	<u>TRANSFER</u>	<u>TOTAL</u>
College of Arts & Sciences	300	350	650
Lewiston/Auburn College	12	69	81
School of Applied Science	30	57	87
School of Business	69	73	142
College of Nursing	83	63	146
Undeclared	263	149	412
Conditional	252	23	275
Other	0	0	0
TOTAL	1009	784	1,793

SAT MEANS FOR REGULARLY ADMITTED FIRST-YEAR BACCALAUREATE STUDENTS



(Source: Admissions Office)

FALL ENROLLMENT 1996 - 2005

	Fall 1996	Fall 1997	Fall 1998	Fall 1999	Fall 2000	Fall 2001	Fall 2002	Fall 2003	Fall 2004	Fall 2005
Full-Time Students	4,435	4,698	4,857	4,982	5,128	5,374	5,709	5,871	5,953	5,987
Part-Time Students	5,531	5,532	5,605	5,663	5,692	5,592	5,673	5,136	5,136	4,987
TOTAL ENROLLMENT	9,966	10,230	10,462	10,645	10,820	10,966	11,382	11,007	11,089	10,974

FALL ENROLLMENT 1996-2005

