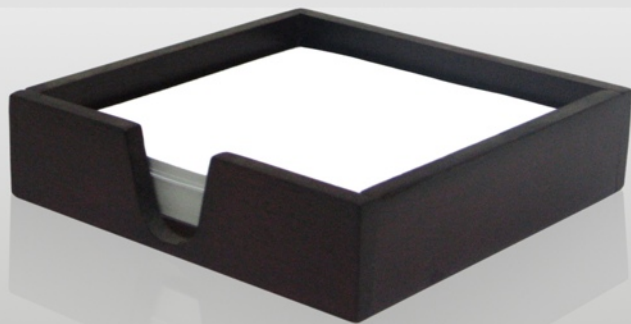




ELECTRONIC FORM BANK

MODULE 9

Promoting
Advising for
Student
Success
PORTal



A central USM Form Bank includes most frequently used forms.

9.ELECTRONIC FORM BANK

Application Forms:

Undergraduate:

First Year Student Application:

http://www.usm.maine.edu/admit/freshman_instructions.html

Transfer Student Application:

http://www.usm.maine.edu/admit/transfer_instructions.html

Adult Student Application:

http://www.usm.maine.edu/admit/adult_instructions.html

International Student Application:

http://www.usm.maine.edu/admit/international_instructions.html

Readmission/Reactivation to USM:

http://www.usm.maine.edu/admit/reactivation_instructions.html

Application for Degree:

<http://www.usm.maine.edu/~reg/applicationfordegree.pdf>

Graduate:

Graduate Student Application:

<http://usm.maine.edu/grad/applying/gradapplication.pdf>

Graduate Certificate Program Application:

http://www.usm.maine.edu/grad/APPLICATION_FOR_CERTIFICATE%20PROGRAM.pdf

Reapplication to USM:

<http://www.usm.maine.edu/grad/reapplication%20form.htm>

Letter of Recommendation:

<http://www.usm.maine.edu/grad/applying/LORform.pdf>

College of Nursing and Health

Professions Program Selection:

<http://www.usm.maine.edu/grad/prospective/CNHP%20Program%20Selection%20Form.htm>



Academic and Financial Forms:

Academic Forgiveness:	http://www.usm.maine.edu/~reg/academicforgiveness.pdf
Add:	http://www.usm.maine.edu/~reg/ADDFORM.pdf
Application for Degree:	http://www.usm.maine.edu/~reg/applicationfordegree.pdf
Catalog Change Date:	http://www.usm.maine.edu/~reg/catalogchange.htm
Change of Major:	http://www.usm.maine.edu/~reg/majorchange.pdf
Change of Residency Status:	http://www.usm.maine.edu/busos/request_of_residency_status.pdf
Course Withdrawal:	http://www.usm.maine.edu/~reg/coursewithdrawal.htm
Declaration of Minor:	http://www.usm.maine.edu/~reg/declarationminor1.htm
Drop:	http://www.usm.maine.edu/~reg/DROPPFORM.pdf
FAFSA:	http://www.fafsa.ed.gov/
Grade Change:	http://www.usm.maine.edu/~reg/gradechange.pdf
Graduation Planner:	http://www.usm.maine.edu/advising/gradplanner.htm
Independent Study:	http://www.usm.maine.edu/~reg/independentstudy.htm
ISIS/DSIS Request:	http://www.usm.maine.edu/~reg/isisformnew.pdf
Name and Address Change:	http://www.usm.maine.edu/~reg/nameaddress.pdf
Prior Approval (CAS):	http://usm.maine.edu/cas/pdf/req4priorapprvl20207.pdf
Prior Approval (USM):	http://www.usm.maine.edu/~reg/priorapproval.pdf
Registration Worksheet:	http://www.usm.maine.edu/~reg/registrationwrksh.pdf
Repeat/Audit:	http://www.usm.maine.edu/~reg/repeataudit.pdf
Satisfactory Academic Progress for Financial Aid:	http://www.usm.maine.edu/fin/sap4.pdf
Semester Leave:	http://www.usm.maine.edu/~reg/semesterleave.pdf
Scholarships:	http://www.usm.maine.edu/fin/scholarships.htm
Transcript Request:	http://www.usm.maine.edu/~reg/transcriptrequest.pdf
Variable Credit:	http://www.usm.maine.edu/~reg/VARIABLE%20CREDITWPD.htm
Verification:	http://www.usm.maine.edu/~reg/verification.htm
Veterans Services Certification:	http://www.usm.maine.edu/advising/veterans/certification.html
Withdrawal Date Change:	http://www.usm.maine.edu/busos/wdpolicy.pdf

Testing and Assessment:

Placement Test:	http://usm.maine.edu/testing/testing/register.html#form
MAT, GRE (subject), LSAT, PRAXIS, PLNE:	http://usm.maine.edu/testing/testing/nationaltests.html
GMAT:	http://www.mba.com/
GRE (general), TOEFL:	http://www.prometric.com/default.htm
CLEP, DANTES, Excelsior:	http://usm.maine.edu/pla/clep-dantes-excelsior.html

